



Portland Main Street



Portland wall and awning



Portland Butchers 1910

PORTLAND NSW

"The Town that built Sydney"

by Trevor Patrick

Portland is only two and a half hours from Sydney. It is an easy 40 minutes to Bathurst and 30 minutes from Lithgow. This historic mining town was the place of the first cement works in Australia, which opened in 1902. Cement produced at the Portland cement works helped build the city of Sydney and was also shipped around Australia until the works closed in 1991.

Portland is part of the gateway to the Central West and is ideally located between Oberon,

Mudgee, Bathurst and Lithgow and the Blue Mountains. The town is surrounded by beautiful countryside and has many areas for bushwalking, and bird watching. It is close to the Wollemi and Gardens of Stone National Parks.

Portland is a mecca for people wishing to escape the hustle and bustle of the city to enjoy the surrounding countryside. Wander along the streets of Portland and enjoy shopping in stores where many hard-to-find artefacts can be found in the old wares shops and galleries. Also worth exploring is the Charlie Pinch Museum, which contains a large collection of Australian memorabilia.

While in Portland enjoy a picnic in the Town





Portland Church of England



19th century brick bottle kilns near the Portland Cement Works site



Portland Cement Works skips



Iron lace verandah

Common, take a leisurely stroll along the Williwa Creek, or simply relax in the quiet and peaceful surroundings. The Portland Town Common has 650 acres of natural bushland and picnic areas and is ideal for bushwalks. In fact, Portland is one of very few country towns left with a Town Common.

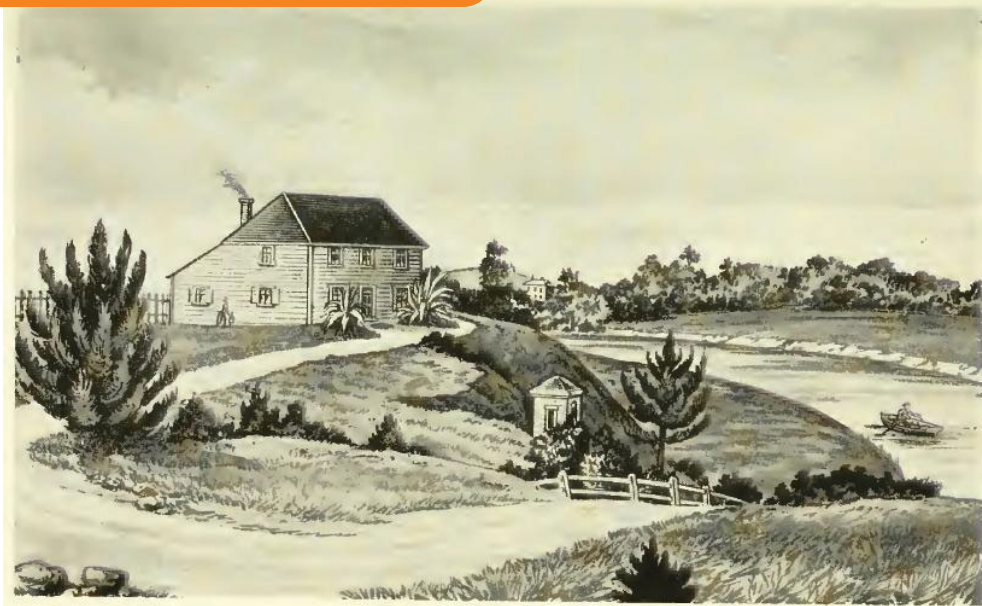
In 2001 Ron Bidwell, a signwriter by trade, together with fellow artists, recreated vintage signs dating from 1895 to 1945 on local shop walls. Take a trip back in time and come and see historic brand names such as: Goanna Salve, Arnotts Famous Biscuits, Toohey's Ale, Uncle Toby's Oats, Kinkara Tea, Mother's Choice Flour, Bushell's Tea, Solvol, Federal Safety Matches and Swagman Blend Tea.

NEW ONLINE EXPERIENCE AT HAMBLEDON COTTAGE MUSEUM

**Discover a 360 degree virtual tour of
the cottage and discover its history and
treasures. Just visit
www.hambledoncottagemuseum.org.au
and explore!**

*More on Parramatta at www.hillstory.com.au
Trevor Patrick Author "In Search of the Pennant
Hills" The award-winning book of the three
settlements of the Hills District of northern Sydney.
Trevor Patrick is author "In Search of The Pennant
Hills" award-winning regional history of the three
settlements in the Hills District of northern Sydney.*





Samuel Marsden's Cottage in Parramatta on the property known as Rangihou

Parramatta's strong link with the Maoris

The street names of New Zealand Street and Rangihou Reserve on the northern shore of the Parramatta River indicate the connections with New Zealand in earlier days.

Reverend Samuel Marsden owned much of the land on the northern bank from 1822 and his home named Newland was on property known as *Rangihou*. The house was set up as a school to be used by the Maoris he had invited over from New Zealand. The name *Rangihou* is after Rangihou Bay in the Bay of Islands, near where he preached the first Christian sermon in New Zealand in 1814. The Bay was also the birthplace of the Ngapuhi chief Ruatara. Marsden had met Ruatara by chance when taking passage on the *Ann*, a convict ship travelling to Australia in 1810.

Further Maori Connections

Parramatta has an enduring link with New

Zealand from the earliest days of settlement.

In 1805 Maori Chief Te Pahi arrived in Parramatta and was a guest of Governor Phillip Gidley King at Government House. During his three month stay he met Samuel Marsden and attended St John's Church.

Reverend Samuel Marsden returned to England in 1807 to recruit clergy for the colony. He took with him the first consignment of Australian wool large enough to be woven into cloth. He sailed back into Sydney harbour in 1810 on board *The Ann*, a convict transport ship. Ngapuhi chief Ruatara was also onboard and inspired Marsden to set up a mission in New Zealand. He invited Maori Chiefs Ruatara, Hongi Hika, Korokoro and their families to come and live with him in Parramatta. The purpose was to stimulate trade and relationships, as well as safe passage and protection for Europeans travelling to New Zealand.

The suburb of Paremata, in Porirua, Wellington, NZ was named after Parramatta.



John Macarthur's *Hambledon Cottage* HOUSE MUSEUM

NEW!
360° VIRTUAL
TOUR NOW
AVAILABLE
ONLINE



DISCOVER REAL AUSTRALIAN HISTORY where it happened!

The Guides from Parramatta & District Historical Society welcome you to their beautiful historic cottage.

Now open every Saturday and Sunday.
Opening hours from 11am, with the last tour at 3pm.
Groups may apply for guided tours during the week
if more than 15 persons are coming.

Hambledon Cottage is COVID compliant, with hand hygiene and recording of contact details. A mask is optional whilst in Hambledon Cottage – visitors should bring their own mask or purchase one on site.

**Visit Hambledon Cottage website for an exciting
360 degree virtual view of the Cottage and its
treasures.**

**JOHN MACARTHUR'S HAMBLEDON COTTAGE
HOUSE MUSEUM**

Gregory Place, Parramatta. Ph: 9635 6924

www.hambledoncottagemuseum.org.au

www.facebook.com/parramattahistorical/



Female Factory Exhibition

